

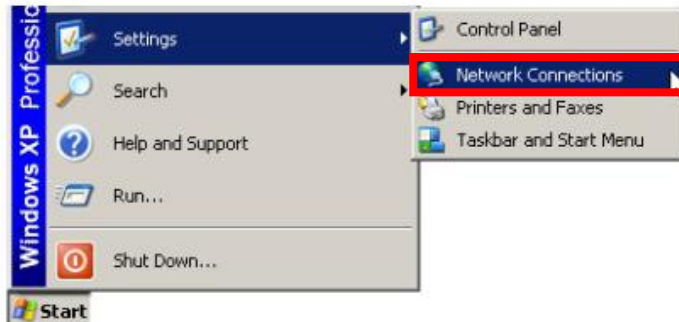
## How to Access the Wireless Network

This document guides you on how do you get connected to the wireless network in Monash.

**NOTE:** Before you begin, please ensure that

- You have an active Authcate account. If you are a visitor, please proceed to the ITS Service Desk to request for a visitor account.
- Your wireless network card is enabled. Some machines have a separate switch which turns the wireless network card on and off.

**STEP 1 -** Click on **Start → Settings → Network Connections**



**STEP 2 -** Double click on the **Wireless Network Connection** icon.

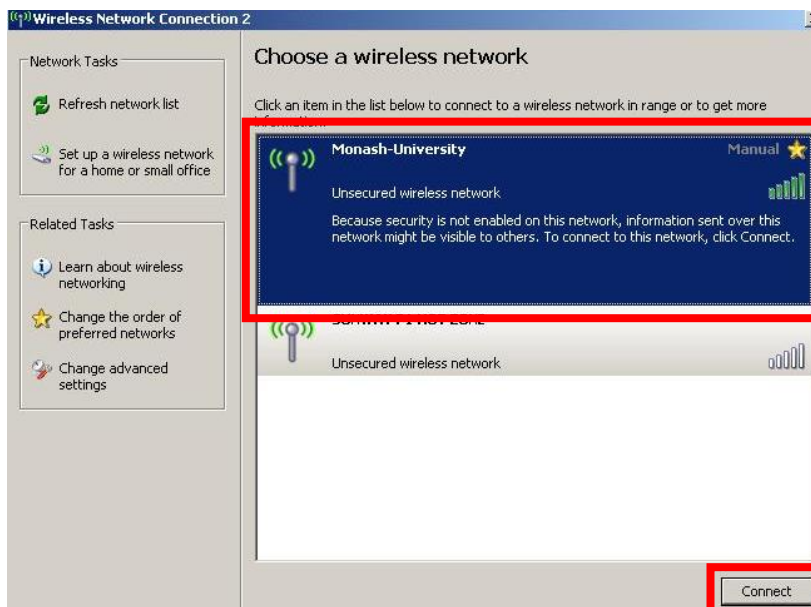
**Dial-up**



**LAN or High-Speed Internet**



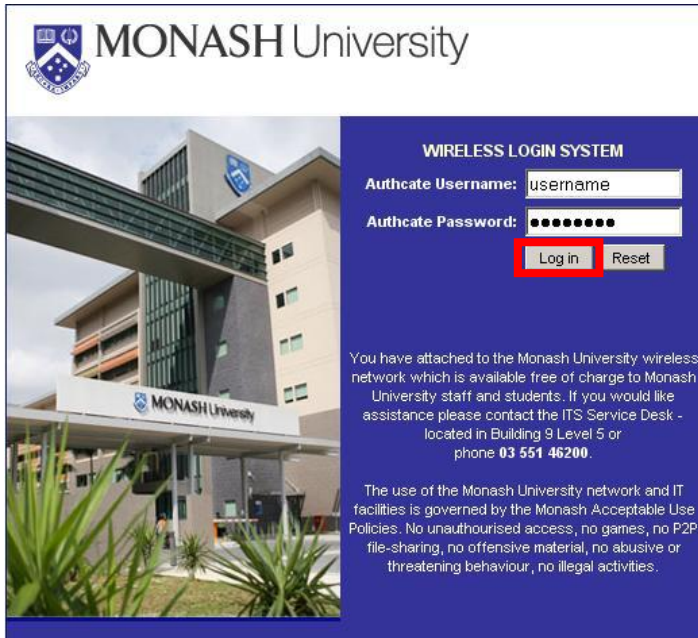
**STEP 3 -** Click on **Refresh network list** to search for a wireless network (SSID). Select **Monash-University**, highlight it and click **Connect**.



**STEP 4 -** Once you are successfully connected to the wireless network, the status will reflect as **Connected**.



**STEP 5 -** Launch your internet browser and you will be automatically redirected to an authentication page. Key in your Authcate credentials and click on the **“Log In”** button to proceed.



**STEP 6 -** You are now ready to surf the internet.

**STEP 7 -** If you encounter any problem with the given instructions above, kindly contact the ITS Servicedesk Office located at Building 9, Level 3. Alternatively, you may reach us at extension 46200 or e-mail us at [servicedesk@monash.edu.my](mailto:servicedesk@monash.edu.my)